

HAVE YOU EVER HEARD OF SUPPORTED DECISION MAKING AS AN ALTERNATIVE TO GUARDIANSHIP?

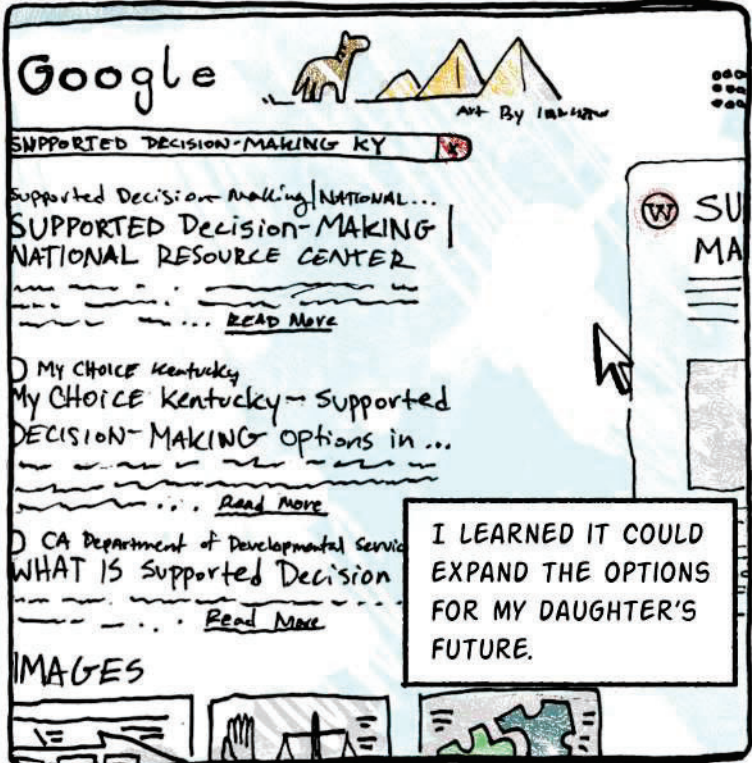
I HADN'T.



SUPPORTED DECISION MAKING IS A PRACTICE OF WORKING WITH PEOPLE YOU TRUST -- FRIENDS, FAMILY, PROVIDERS AND OTHERS --



-- TO GAIN THE INFORMATION AND SUPPORT TO MAKE DECISIONS.



Google

SUPPORTED DECISION-MAKING KY

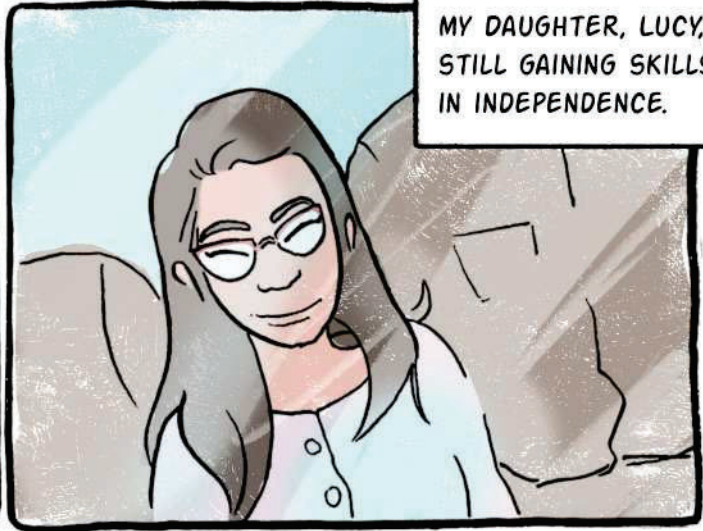
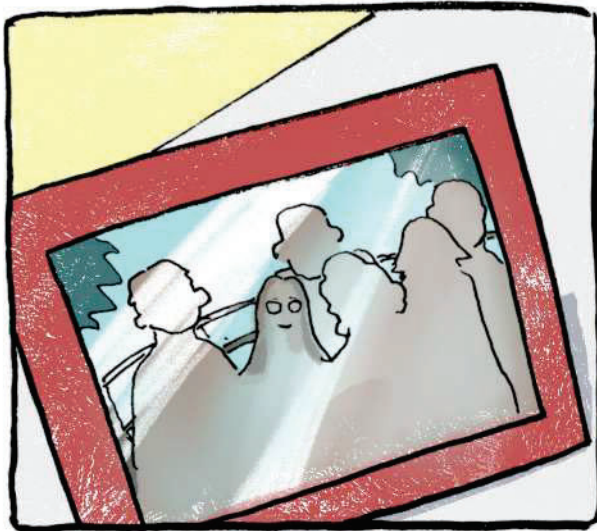
SUPPORTED DECISION-MAKING | NATIONAL RESOURCE CENTER

My CHOICE Kentucky - Supported DECISION-MAKING options in ...

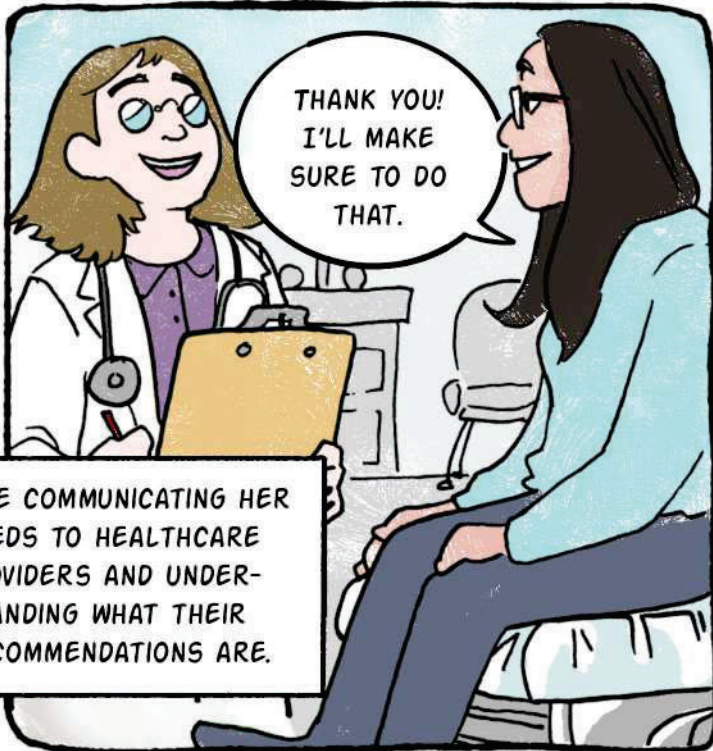
CA Department of Developmental Services WHAT IS Supported Decision

IMAGES

I LEARNED IT COULD EXPAND THE OPTIONS FOR MY DAUGHTER'S FUTURE.



MY DAUGHTER, LUCY, IS STILL GAINING SKILLS IN INDEPENDENCE.



THANK YOU! I'LL MAKE SURE TO DO THAT.

LIKE COMMUNICATING HER NEEDS TO HEALTHCARE PROVIDERS AND UNDERSTANDING WHAT THEIR RECOMMENDATIONS ARE.



DEBIT, PLEASE.

OR, LEARNING HOW TO USE A DEBIT CARD WHILE STAYING IN A BUDGET.



SHE'S GAINING SKILLS AND CONFIDENCE FOR HER INDEPENDENCE EVERY DAY --

MAYBE I'LL TELL LUCY AND EVERYONE ABOUT IT.

-- AND WE DIDN'T WANT TO TAKE THAT FROM HER.

WE STARTED TALKING THROUGH SDM AS A FAMILY. WE WENT OVER ALL THE BENEFITS OF SDM, KNOWING THAT GUARDIANSHIP CAN ALWAYS BE AN OPTION.

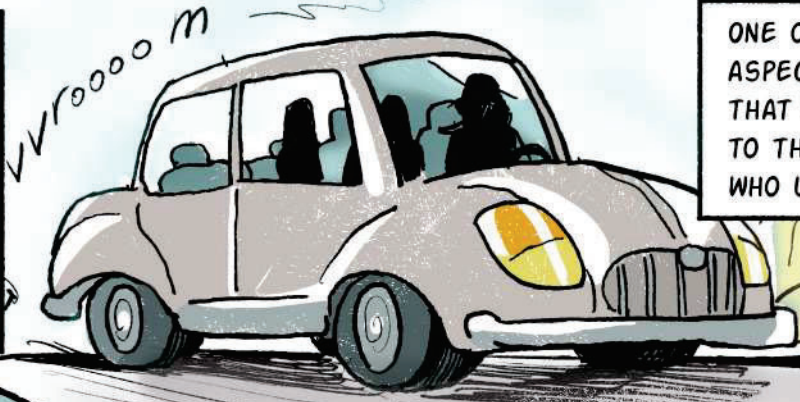
BUT -- IT IS ULTIMATELY UP TO LUCY.

LUCY MAKES ALL THE DECISIONS REGARDING SDM, INCLUDING WHETHER SHE WANTS TO USE IT OR NOT.



SO, WE DECIDED TO MEET WITH A LAWYER TO HELP US FIND A STARTING POINT.

CHOOSING AN ATTORNEY WITH EXPERTISE IN PLANNING FOR ADULTS WITH DISABILITIES IS A CRITICAL STEP IN DETERMINING WHICH OPTIONS WORK BEST FOR EACH INDIVIDUAL.



ONE OF THE BEST ASPECTS OF SDM IS THAT IT IS TAILORED TO THE INDIVIDUAL WHO USES IT.



HI LUCY, THANKS FOR COMING!

THIS IS IMPORTANT BECAUSE EVERYONE'S SITUATION IS DIFFERENT.



WE TALKED THROUGH ALL THE OPTIONS WITH LUCY, AND WE DECIDED WHICH PROTECTIONS WOULD BENEFIT HER MOST.

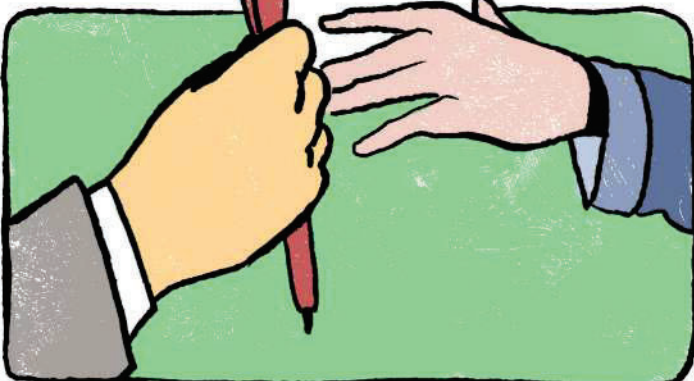


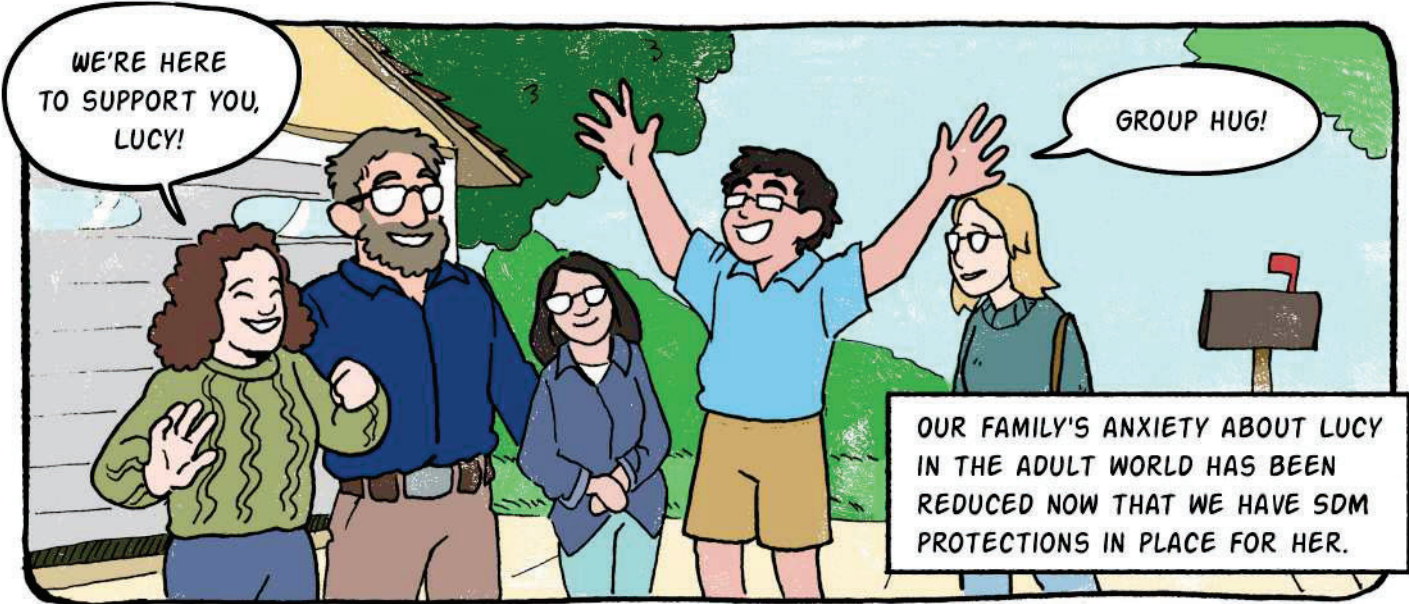
OKAY, THIS IS EXACTLY WHAT I NEED.

I'M READY IF YOU ARE!

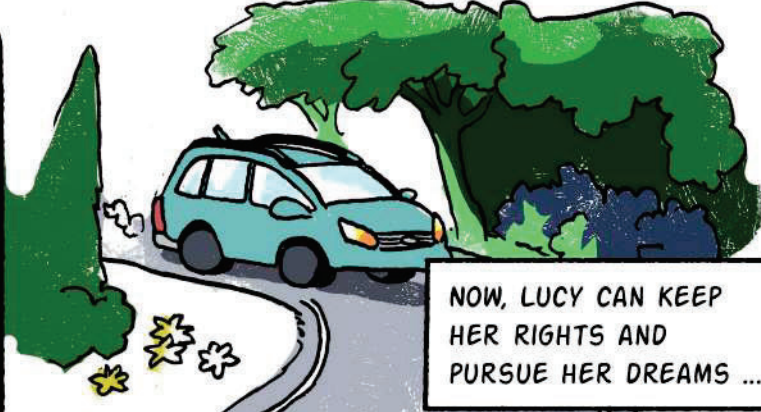


GREAT! LET'S SIGN SOME PAPERS!

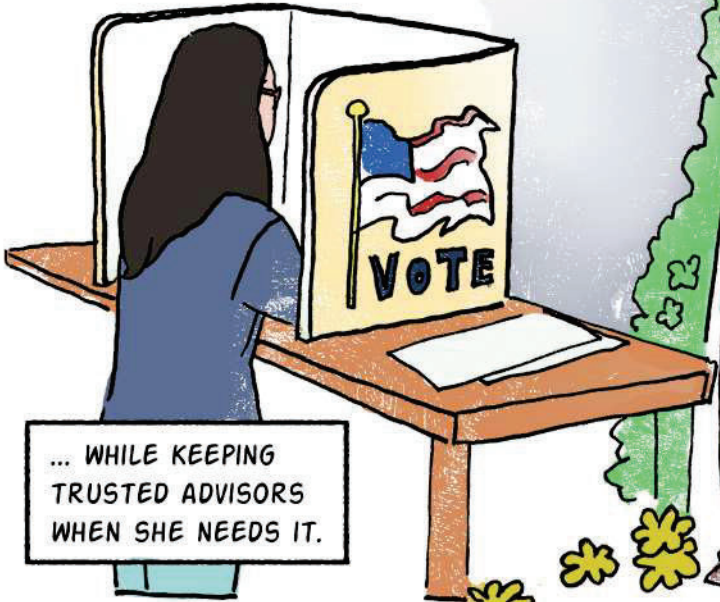




OUR FAMILY'S ANXIETY ABOUT LUCY IN THE ADULT WORLD HAS BEEN REDUCED NOW THAT WE HAVE SDM PROTECTIONS IN PLACE FOR HER.

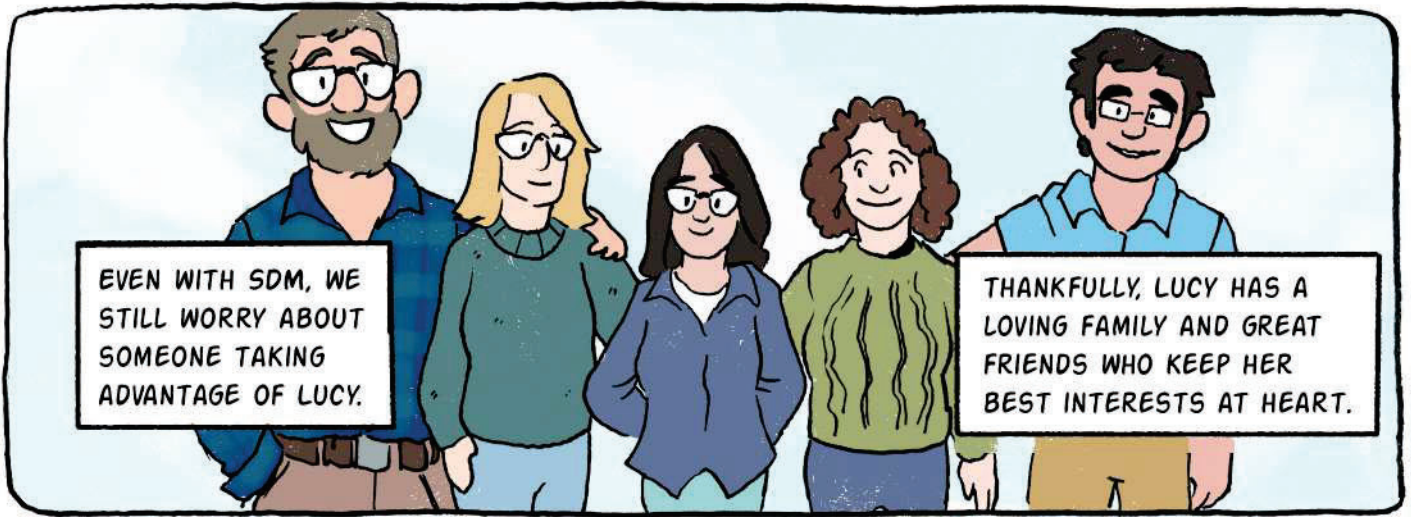


NOW, LUCY CAN KEEP HER RIGHTS AND PURSUE HER DREAMS ...



... WHILE KEEPING TRUSTED ADVISORS WHEN SHE NEEDS IT.





SUPPORTED DECISION MAKING IS AN ALTERNATIVE MODEL TO GUARDIANSHIP, AND IT CAN LOOK VERY DIFFERENT FROM PERSON TO PERSON.

LUCY IS USING SDM BY SELECTING HER FAMILY AS HER ADVISORS. SHE CAN ASK FOR THEIR HELP WHEN MAKING DIFFICULT DECISIONS, BUT SHE ULTIMATELY MAKES THE FINAL CALL.

ONE OF HER FRIENDS MIGHT DECIDE TO USE A FRIEND FOR SUPPORT, OR EVEN SOMEONE UNRELATED TO THEIR FAMILY. SOME PEOPLE NEED GUARDIANSHIP TO PROTECT THEM.



UK Human Development Institute



FOR MORE STORIES LIKE LUCY'S, CHECK OUT OUR NEXT COMIC!